

Single sided ID CARD PRINTER

# SMART-50S



300dpi Edge-to-Edge Single Sided Printing

Easy Card Issuing

Excellent Convenience

FINE™ Imaging Technology

Low Cost Security with UV Printing



## Ideal solution to print any kind of single-side ID cards!

SMART-50S printer produces full-color or monochrome cards in moment and it is ideal solution to print ID cards on demand or in volume.

SMART-50S offers a wide range of optional features including magnetic encoder, contact and contactless smart card encoders making it ideal for many applications in a variety of environments.

Requires single-sided printing of ID cards:

- Employee ID card
- Student ID
- Payment card
- Health card
- Leisure resort pass card
- Identification card
- Transport pass card
- Loyalty card
- Event card



### FEATURES

- Color & Mono Single Side Printing
- Print Speed: 22 sec./card (YMCKO)
- 300dpi with Edge-to-Edge Printing
- 2 Lines LCD with 2 LED Buttons for Front Operation
- Advanced Cleaning Roller
- Low Cost Security with UV Printing
- Installable Encoders: MS, Contact & Contactless, SIM
- Upgradable Modules: Flipper, Laminator & Ethernet



### ISSUANCE

SMART Applications ensure proper card issuance and data management with SMART series printers at no extra cost.

- SMART Design
- Design and Print (Images, Photos, Texts, etc.)
  - 1D & 2D Barcode printing
  - Auto portrait
  - (Auto face detection & adjustment of size & position)

- SMART DB
- Convenient issuance of cards and data management
  - Supports ODBC (Open Database Connectivity)
  - Magnetic stripe (MS), contact & contactless smart card encoding by using plug-in program



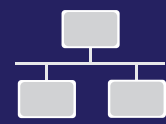
### SECURITY

SMART series provides effective security features for access control and data encryption.

SMART series has a password verification function to provide administrator and user authentications.

SMART series can set a specific authorized PC for encoding and printing cards.

SMART series can encrypt data transmitted on USB and can support SSL (Secure Socket Layer) protocol on ethernet communications.



### NETWORKING

SMART series can utilize the network printer server for encoding and printing cards.

SMART Ethernet module can not only print cards but also encode MS, contact and contactless smart card through the network.

SMART Ethernet module has OCP(Open Card Print)protocol which can encode and print cards by using commands on multiple platforms without installing the printer driver.

Available encoding the contact & contactless smart card by Ethernet.

## Specifications

### PRINTING

- Print Type Dye-Sublimation
- Print Area Edge to Edge
- Resolution 300dpi
- Dual Sided Printing Option (with Flipper)

### CARD

- Card Feeding Automatic
- Card Size ISO CR80 (54mm x 86mm / 2.12" x 3.38" )
- Card Thickness 0.38mm (15mil), 1.0mm (40mil)
- Card Type PVC, PET, Composite PVC

### PRINT SPEED

- Monochrome 5 sec./card (720 cards/hour)
- YMCKO 22 sec./card (164 cards/hour)  
Max. 18 sec./card (220 cards/hour)

### CAPACITY

- Input Hopper 100 cards
- Output Hopper 40 cards

### SYSTEM

- Memory 64MB RAM
- Display 2 Line LCD
- Control Panel 2 LED Buttons
- Supported Platforms Microsoft Windows 2000/ 2003/ XP/ Vista/ 7/ 8/, Mac OS, Linux
- Communication USB, Ethernet (Option)
- Power Supply Free Voltage (AC100/ 200V, 50-60Hz)
- Power Consumption 48
- Temperature/Humidity 15~35℃ / 35~70%

### DIMENSIONS

- Millimeter (WxLxH) 170 x 420 x 195
- Inch (WxLxH) 6.7 x 16.5 x 7.7

### WEIGHT

- Kg/lbs 4.5 / 10

### ENCODING OPTIONS

- Magnetic ISO7811 (Track I, II, III Read/ Write, HiCo/ LoCo), JIS II
- Contact ISO 7816 (ID-1)
- Contactless MIFARE, ISO 14443 (Type A/ B), ISO 15693, DESFIRE, iCLASS

### CERTIFICATIONS



## Consumables

### COLOR RIBBONS

#### YMCKO

Full Color Ribbon with Resin Black & Overlay



250 Cards/Roll

#### YMCFKO

Full Color Ribbon with UV Panel, Resin Black and Overlay



200 Cards/Roll

#### HYMCKO

Half Panel Size Color Ribbon with Resin Black and Overlay



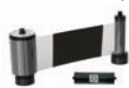
350 Cards/Roll



### MONO RIBBONS

#### KO

Black with Overlay



600 Cards/Roll

#### K

Black



1200 Cards/Roll

#### W

White



1200 Cards/Roll

#### B

Blue



1200 Cards/Roll

#### R

Red



1200 Cards/Roll

#### MG

Metallic Gold



1200 Cards/Roll

#### MS

Metallic Silver



1200 Cards/Roll

#### SO

Scratch-Off



1200 Cards/Roll

Specifications and availability may change without notice.

### Part Numbers:

SMART-50S: 650793  
 SMART-50SN (Eth): 650792  
 SMART-50SM (Mag): 650800  
 SMART-50SMN (Eth/Mag) 650814

Contactless Enc. (USB): 650423  
 Contactless Enc. (Eth): 651065  
 Contact IC Enc.: 650421

YMCKO, 250/cards: 650634  
 Black Resin, 1200 cards: 650653

Add "K" to any printer part number for a kit (1 YMCKO Ribbon, 1 100pk Cards, & 1 Long Cleaning Card)



### IDP Corp., Ltd.

- OFFICE : Room 601, 50, Digital-ro 33-gil, Guro-gu, Seoul, 152-742, Korea
- TEL : +82-2-6099-3700 • FAX : +82-2-6099-3717
- E-mail : sales@idp-corp.com

### IDP Americas, Inc. (UNITED STATES & CANADA)

- OFFICE : 200 Circuit Drive, North Kingstown, RI 02852
- TEL : +1-401-400-7111 • FAX : +1-401-667-7445
- E-mail : sales.na@idpnorthamerica.com