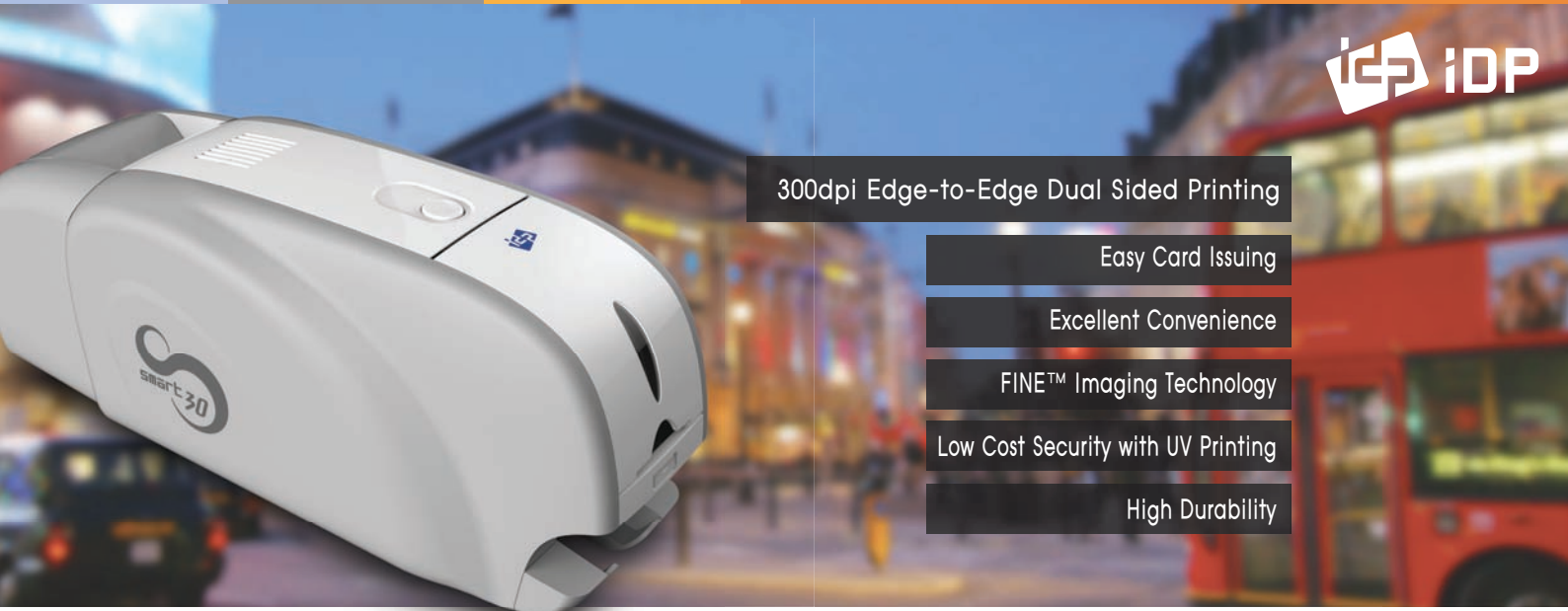




Dual sided ID CARD PRINTER

SMART-30D



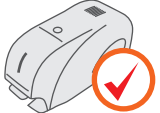
- 300dpi Edge-to-Edge Dual Sided Printing
- Easy Card Issuing
- Excellent Convenience
- FINE™ Imaging Technology
- Low Cost Security with UV Printing
- High Durability

SMART-30D is Value for Everyone!

For dual-sided color printing, SMART-30D support easy printing, high-quality graphics, in the same products field, either in color or in monochrome. It is ideal solution to print ID cards on demand or in volume.

SMART-30D offers a wide range of optional features including magnetic encoder, contact and contactless smart card encoders making it ideal for many applications in a variety of environments.

- Requires dual-sided printing of ID cards:
- Employee ID card
 - Student ID
 - Payment card
 - Health card
 - Leisure resort pass card
 - Identification card
 - Transport pass card
 - Loyalty card
 - Event card



FEATURES

- Single or Dual Sided Printing
- Print Speed: 33 sec./card (YMCKOK)
- 300dpi with Edge-to-Edge Printing
- 30S Field Upgradable to 30D
- LED Button for Front Operation
- Low Cost Security with UV Printing
- Installable Encoders: MS, Contact & Contactless, SIM
- Upgradable Modules: Ethernet



ISSUANCE

SMART Applications ensure proper card issuance and data management with SMART series printers at no extra cost.

- SMART Design
- Design and Print (Images, Photos, Texts, etc.)
 - 1D & 2D Barcode printing
 - Auto portrait
 - (Auto face detection & adjustment of size & position)

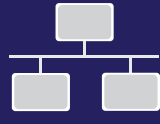
- SMART DB
- Convenient issuance of cards and data management
 - Supports ODBC (Open Database Connectivity)
 - Magnetic stripe (MS), contact & contactless smart card encoding by using plug-in program



SECURITY

SMART series provides effective security features for access control and data encryption.

- SMART series has a password verification function to provide administrator and user authentications.
- SMART series can set a specific authorized PC for encoding and printing cards.
- SMART series can encrypt data transmitted on USB and can support SSL (Secure Socket Layer) protocol on ethernet communications.



NETWORKING

SMART series can utilize the network printer server for encoding and printing cards.

- SMART Ethernet module can not only print cards but also encode MS, contact and contactless smart card through the network.
- SMART Ethernet module has OCP(Open Card Print) protocol which can encode and print cards by using commands on multiple platforms without installing the printer driver.
- Available encoding the contact & contactless smart card by Ethernet.

Specifications

PRINTING

- Print Type Dye-Sublimation
- Print Area Edge to Edge
- Resolution 300dpi
- Dual Sided Printing Dual Sided Printing

CARD

- Card Feeding Automatic
- Card Size ISO CR80 (54mm x 86mm / 2.12" x 3.38")
- Card Thickness 0.38mm (15mil), 0.76mm (30mil)
- Card Type PVC, PET, Composite PVC

PRINT SPEED

- Monochrome 5 sec./card (720 cards/hour)
- YMCKO 28 sec./card (128 cards/hour)
- YMCKOK 24 sec./card (106 cards/hour)

CAPACITY

- Input Hopper 80 cards
- Output Hopper 25 cards

SYSTEM

- Memory 64MB RAM
- Control Panel 1 LED Button
- Supported Platforms Microsoft Windows 2000/ 2003/ XP/ Vista/ 7/ 8/, Mac OS, Linux
- Communication USB, Ethernet (Option)
- Power Supply Free Voltage (AC100/ 200V, 50-60Hz)
- Power Consumption 48
- Temperature/Humidity 15~35°C / 35~70%

DIMENSIONS

- Millimeter (WxLxH) 172 x 472 x 170
- Inch (WxLxH) 6.8 x 18.6 x 7.5

WEIGHT

- Kg/lbs 4.2 / 9.5

ENCODING OPTIONS

- Magnetic ISO7811 (Track I, II, III Read/ Write, HiCo/ LoCo), JIS II
- Contact ISO 7816 (ID-1)
- Contactless MIFARE, ISO 14443 (Type A/ B), ISO 15693, DESFIRE, iCLASS

CERTIFICATIONS



Consumables

COLOR RIBBONS

YMCKO	YMCKOK	YMCFKO	HYMCKO
Full Color Ribbon with Resin Black & Overlay	Full Color Ribbon with Resin Black, Overlay & Black for Back Side	Full Color Ribbon with UV Panel, Resin Black and Overlay	Half Panel Size Color Ribbon with Resin Black and Overlay
			
250 Cards/Roll	200 Cards/Roll	200 Cards/Roll	350 Cards/Roll



MONO RIBBONS

KO	K	W	B	R	MG	MS	SO
Black with Overlay	Black	White	Blue	Red	Metallic Gold	Metallic Silver	Scratch-Off
							
600 Cards/Roll	1200 Cards/Roll	1200 Cards/Roll	1200 Cards/Roll	1200 Cards/Roll	1200 Cards/Roll	1200 Cards/Roll	1200 Cards/Roll

Specifications and availability may change without notice.

Part Numbers:

SMART-30D: 651106
Add Ethernet: 650967
Add Mag Encoding: 650084

Contactless Enc. (USB): 651081
Contactless Enc. (Eth): 651083
Contact IC Enc.: 651079

YMCKOK, 200/cards: 650637
YMCKO, 250/cards: 650634
Black Resin, 1200 cards: 650653

Add "K" to any printer part number for a kit (1 YMCKO Ribbon, 1 100pk Cards, & 1 Long Cleaning Card)



IDP Corp., Ltd.

- OFFICE : Room 601, 50, Digital-ro 33-gil, Guro-gu, Seoul, 152-742, Korea
- TEL : +82-2-6099-3700 • FAX : +82-2-6099-3717
- E-mail : sales@idp-corp.com

IDP Americas, Inc. (UNITED STATES & CANADA)

- OFFICE : 200 Circuit Drive, North Kingstown, RI 02852
- TEL : +1-401-400-7111 • FAX : +1-401-667-7445
- E-mail : sales.na@idpnorthamerica.com

www.idp-corp.com