

# IrisAccess® 7000

Stand-alone Iris Recognition Platform

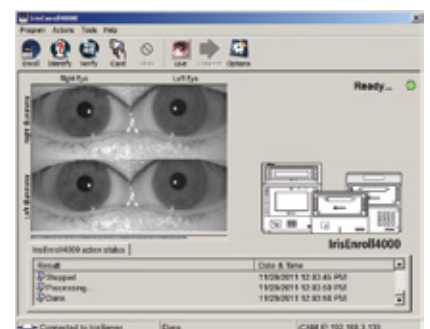
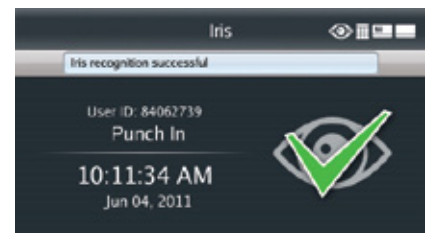


iCAM7101

iCAM7111-U1



- Convenient “non-contact” IrisAccess® Solution
- Easy-to-use, Fast, Accurate and Secure
- Largest 1:N Template Capacity in the Industry
- Single-, Two- or Three-factor Authentication\*
- Full Color 4.3” Touch LCD Screen; On Screen PIN Pad
- Programmable Function Keys for Time & Attendance
- Easily Integrated with Existing Access Control Systems
- Backwards Compatible
- Remote Device Management
- Robust Administration Software (iData™ EAC)
- Stand-alone or Multiple Recognition Points
- Transaction and History Report



Iris ID Systems has been the key developer and driver of the commercialization of iris recognition technology. IrisAccess®, now in its fourth generation, is the world’s leading deployed iris recognition platform

The Iris ID iCAM7000 series devices are fully backward compatible with the iCAM4000 series devices. Iris ID continues to protect our existing customer’s installed base by maintaining support for the architecture of the predecessor generations - ROU3000 and iCAM4000. iCAM7000 includes options for integrated card readers and are easily combined with virtually any legacy access control system. With an integrated touchscreen numeric keypad and six discrete function keys a wide range of applications are easily realized. The iCAM7000 series product line provides iris matching solution on or off the device.

Combining Iris ID’s IrisAccess® 7000 and the field proven iData™ EAC software solution from Iris ID’s suite of identity access control applications provides a simple, flexible and robust solution for any environment.

## iData™ EAC Software Features

- Enrollment:** Simple and flexible administrative user interface for enrollment.
- Setup:** Improved software setup and configuration tools for ease of installation.
- Reporting:** Individuals are identified as their biometrics are presented. Transactions are stored in the system log and can be downloaded by a system administrator. Logs can also be integrated into an HR time keeping system. IrisMonitor™ provides real time access reporting for multiple iCAM7000 series devices.

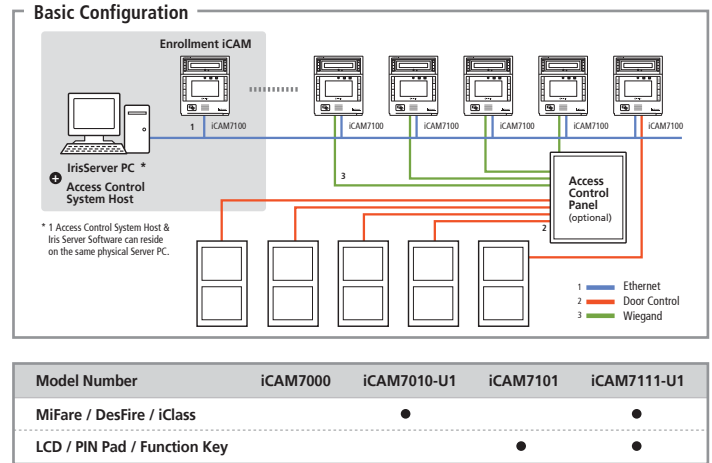
\* May require optional integrated card readers (Prox, iClass, or MIFARE / DESFire)

# System Configuration

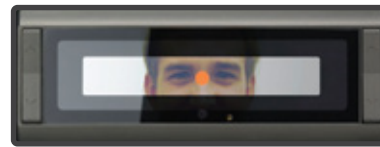
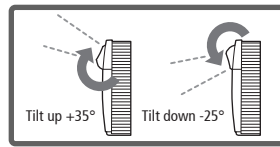
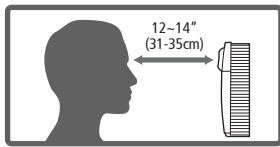
## iCAM7000 series

Dimensions (W x H x D)	7.01" x 8.31" x 2.52" (178mm x 211mm x 64mm)
Weight	3.5lbs (1.6kg)
Power Input / Consumption	12-24 VDC, 2.0 Amps @ 12 VDC / 24W
Status LED	Multi Color - Red, Green, Blue for status and alarm indication
Iris Operating Range Indicator	Dual Color - Orange (out of range), Green (in range)
Voice Indication	English standard, others available by download
Iris Capture Range	12"~14" (31cm~35cm)
User Input	Function keys six user definable (iCAM7100)
Touch Screen LCD Display	4.3" (480 x 272 pixels) (iCAM7100)
Pin Pad	Pop-up on screen pin pad (iCAM7100)
Flash	High output flash for face capture
Face Image Camera	Face camera - 5MP
Transaction Log Capacity	Up to 1,000,000 transactions stored on device, unlimited on server
Relays x 2	Control for user defined operations
External Media Device Connectivity	Secure user accessible USB port
Operating Temperature	32°F~113°F (0°C~45°C)
Storage Temperature	-4°F~203°F (-20°C~95°C)
Humidity	Up to 90% non-condensing
Iris & Face Camera Rotation Angle	+35°/-25°
Communications	Ethernet (LAN, WAN), RS422, RS232
Inputs / Outputs	Proximity Card Reader (Wiegand In), Embedded Smart Card Reader (Optional), Wiegand In, Wiegand Out, Dry Contact Relay x 2, Programmable GPIO x 4
Equipment Supplied with iCAM7000	Instruction Manual - Hardware Guide
IrisAccess EAC Server, iData SDK	Refer to IrisAccess Control Software specifications

The IrisServer PC (iData EAC) controls enrollment and the distribution of 512 byte (two eyes 1K bytes) iris templates to the iCAM units. A Wiegand output or relay can control the operation of the door. A multi color targeting aid is part of an intuitive and interactive interface that includes voice and visual feedback for optimum user experience. iCAM7000 will automatically adjust the recognition mirror the users height when a card is presented to the iCAM. Single, Dual or Tri-Factor authentication is available.



## User Interface



- iCAM activates when user approaches or when card is presented.
- Picture capture range is 12~14 inches (31~35cm) away.
- Self or auto/set height adjustment.
- Placing dot over the bridge of nose, easily helps alignment.

- Orange ● turns to green ● when user is at correct distance.
  - Visual indication is amplified with friendly audio prompts.
  - Right and left irides are acquired.
  - A face picture can also be captured.
- Green dot = In range  
● Orange dot = Out of range

## IrisAccess Vertical Markets



Building Security



Transportation Security



Laboratory Security



Infrastructure Security



Public Safety & Justice



Time & Attendance

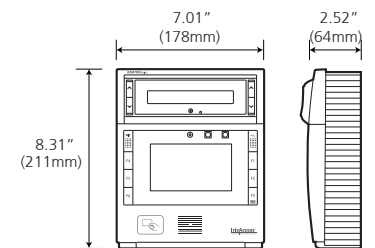
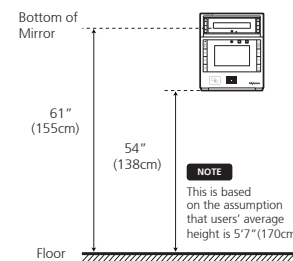


Border Control



Data Center Security

## Installation and Dimension



Suggested mounting height and dimensions.  
Surface Mount: Back plate included.  
Recess Mount: Recess/Trim kit sold separately.

## Eye Safety

Iris ID's heritage as a designer and manufacturer of high quality products is reflected in the utility, intuitiveness, human factors engineering and concern for safety which is the cornerstone of the Iris ID design and innovation process for iris recognition. The IrisAccess cameras meet all US and international electrical code requirements. The subtle illumination produced by IrisAccess cameras have been thoroughly tested and found to fall well within UL, ANSI, and IEC eye safety standards. All IrisAccess generations have been independently tested and approved for eye safety by public and private testing services around the world.



Iris ID, Inc.

7 Clarke Drive, Cranbury, NJ 08512, USA  
Tel. 609-819-IRIS(4747) Fax. 609-819-4736

[www.irisid.com](http://www.irisid.com)

©2012 Iris ID, Inc. All rights reserved. Design and specification subject to change without notice.

